



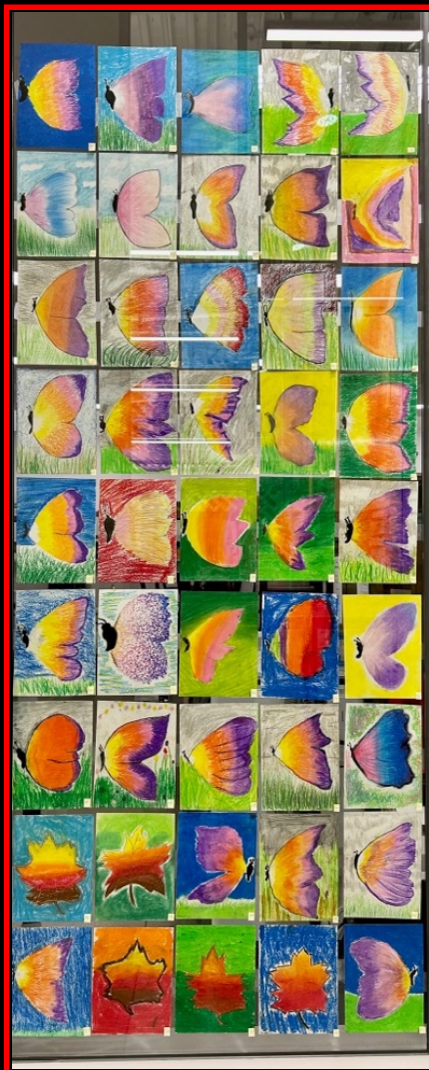
ART FOR KIDS 2023

Works of Student Artists Supported by NorthWest Watercolor Foundation

EVERGREEN MS FEDERAL WAY

“The NWWWS Grant was a huge help to Evergreen MS art students. We were able to purchase: gel presses, brayers, ink stamps, color paper, oil and soft pastels, drawing paper, acrylic paint, and watercolor paint and paper.”





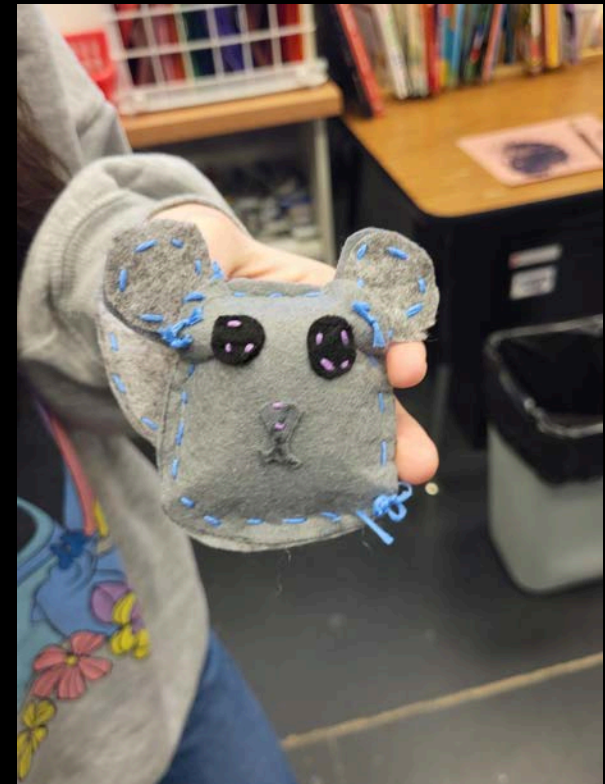
BEECHER'S MIXED MEDIA

Materials in Summer to Fall include oil pastels and charcoal on tag board.



JENNIFER THOMAS GLACIER VIEW JR. HIGH PUYALLUP

- "We made felt Stuffies with felt and crafting needles ordered (from the Grant) so that students could apply The Element of Form. For many of them, this was the first time ever sewing."



GLACIER VIEW JR. HIGH



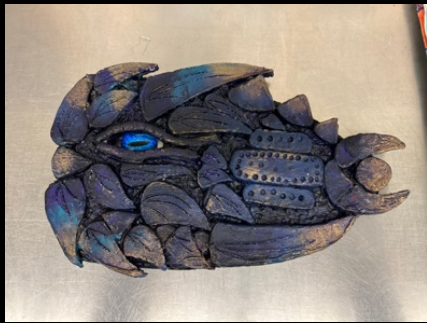
ANDREA BELLERIVE PUYALLUP GLACIER VIEW JUNIOR HIGH DRAGON EYES



"with the help of this grant, 70 students were able to complete this dragon eye. We used regular clay, acrylic paints and glass eyes."

Andi Bellerive, Glacier Jr High

ANDREA BELLERIVE PUYALLYUP JUNIOR HIGH DRAGON EYES



VALERIE HOUGH ORTING ELEMENTARY SCHOOL ART

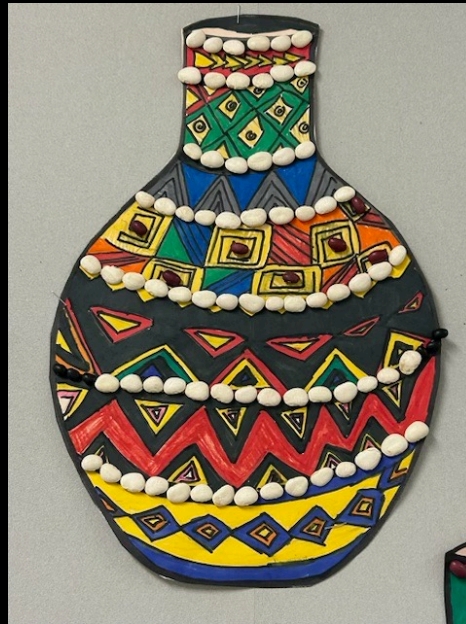
- One of the things I used my Grant for was supplies specifically for my **Life Skills** students to make watercolor painting more accessible.
- Here are some pictures of some of the supplies I purchased in use by our 2 Life Skills classes.



HEIDI SNEAD EVERGREEN MIDDLE SCHOOL ELA CLASS PROJECTS

- Heidi said. “I bought cream construction paper, railroad board, markers and colored beans”. We did this art unit to supplement our Language Arts novel, A Long Walk to Water.”
- The setting of the novel takes place in Sudan, Africa. The students works represents the water gourds or jerry cans that were used to carry clean water to the village. In the novel Salve walks two hours to the water daily.

A LONG WALK TO WATER -CARRYING JARS



HEIDI SNEAD EVERGREEN MS FEDERAL WAY

